

WORKSOURCE GEORGIA MOUNTAINS

Youth Services Program

Georgia Mountains



Connecting Talent with Opportunity
A proud partner of the American Job Center network



Who We Are

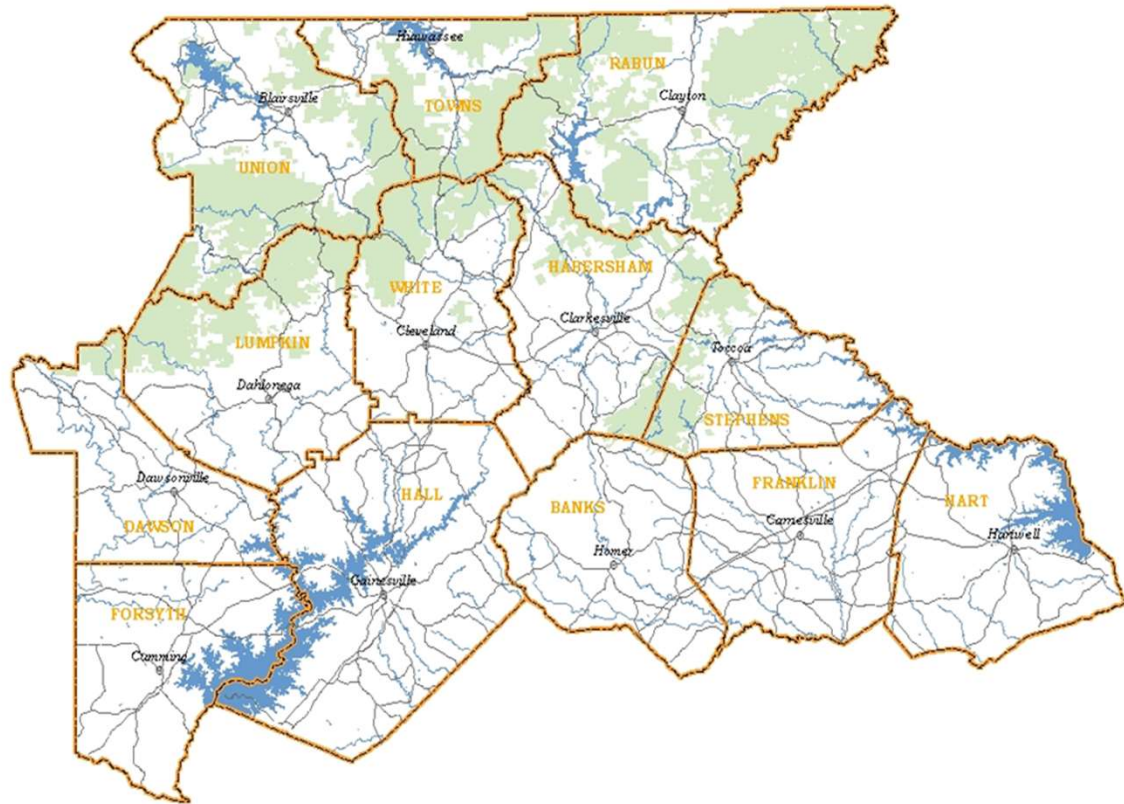
WorkSource Georgia Mountains provides funding for education and training to eligible individuals to enhance their current skills or learn a new trade. WorkSource Georgia Mountains administers the Workforce Innovation and Opportunity Act (WIOA) Program and is funded by the federal government.

Where Does the Money Come From?

The funding we receive is from federal grants. This means participants are not required to pay back any funds received or claim funds on their taxes.

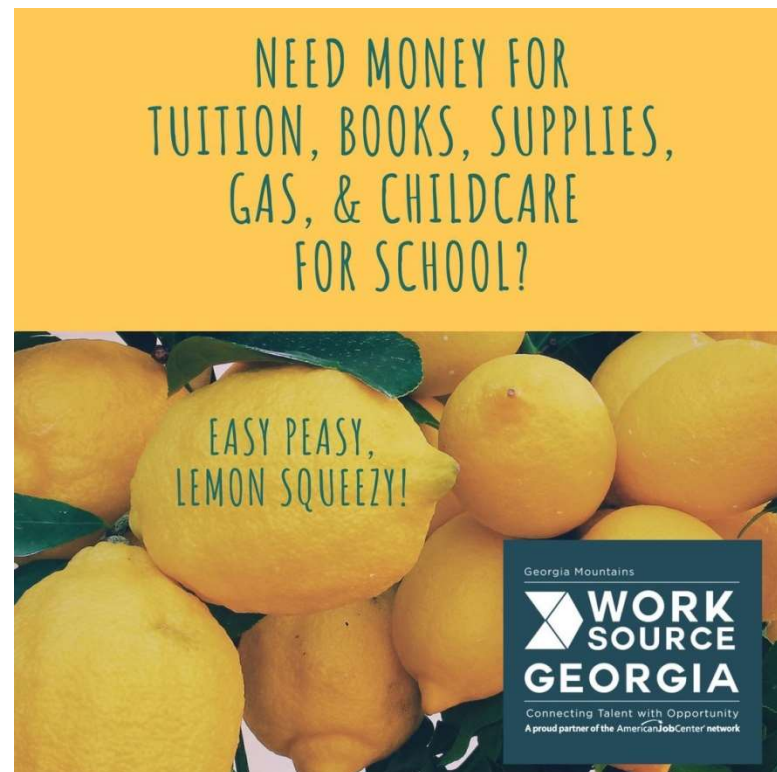
Who Do We Serve?

Individuals who live in Banks, Dawson, Forsyth, Franklin, Habersham, Hall, Hart, Lumpkin, Rabun, Stephens, Towns, Union, and White Counties could be eligible for WIOA assistance through WorkSource Georgia Mountains.



We Help Pay For College & Tech Schools

- Up To \$10,000 For Tuition
 - And it's not a loan!
- \$15 per day for each day in class
- Supportive Services:
 - Daycare
 - Testing Fees
 - Books & Supplies
- May Assist with Paid Work Experience or Internships
- Must Be An Approved School and Program*
- Must be completed within two years or six semesters.



Approved Schools

- Athens Technical College
- Lanier Technical College
- Brenau University
- Kennesaw State University
- CDL of GA, LLC
- Northeast Georgia Resa
- Chattahoochee Technical College
- North Georgia Technical College
- Daly's Truck Driving School
- Piedmont College
- Emmanuel College
- Pioneer Resa
- Georgia Driving Academy
- Goodwill of North Georgia
- Target it Training & Mentoring
- Gwinnett Technical College
- University of North Georgia
- Heavy Equipment College of GA
- Medical Institute of Northeast GA

Approved Programs

- Accountant & Bookkeeper
- Administrative Assistant
- Agriculture
- Automotive Mechanic
- Automotive Structural Repairer
- Bill & Account Collector
- Brick Mason
- Business Administration
- CAD Operator
- Carpenter
- Cashier/Sales Clerk
- Child Development Assistant
- Certified Nursing Assistant
- CNC Machine Operators
- Computer Information Systems
- Construction Laborer
- Correction Officer
- Culinary
- Customer Service Representative
- Data Entry Technician
- Delivery & Route Truck Driver
- Dental Assistant & Dental Hygienist
- Dental Laboratory Technician
- Drafter
- Medical & Laboratory Technician
- Medical Assistant
- Medical Office Worker
- Electrician
- Emergency Medical Technician
- English as a Second Language Instructor
- General Office Clerk
- Hand Packers & Packagers
- Heating/AC Technician
- Home Health Aide
- Hospitality
- Hotel/Motel Management
- Horticulture
- Human Service Worker
- Industrial Machinery Mechanic
- Industrial Truck & Trailer Operator
- Laborer (Warehouse)
- Law Enforcement Officer
- Legal Secretary
- Licensed Practical Nurse (LPN)
- Maintenance Mechanic
- Management Trainee
- Manufacturing Machine Operator
- Mechanic & Repairer Helper
- Medical Records Technician
- Medical Secretary
- Motorcycle Repair Technician
- Occupational Therapist
- Paralegal
- Pharmacy Technician
- Phlebotomist
- Physical Therapist
- Plumber, Pipefitter, & Steamfitter
- Quality Assurance Technician
- Radiological/X-Ray Technician
- Registered Nurse (RN)
- Respiratory Therapist
- Robotics
- Special Education Teacher
- Surgical Technician
- Surveyor
- Teacher
- Truck Driver, Heavy
- Vocational Education Teacher & Instructor
- Welder & Cutter

GED Assistance

- Eligible Applicants may be offered assistance including obtaining a GED through funding for test fees, works skills/employment, training and internships.
- More information is available through Athens Technical College, Lanier Technical College, and North Georgia Technical College's Success Programs.
- \$15 per day for each day in class
- Supportive Services:
 - Daycare
 - Testing Fees
 - Books & Supplies
- May Assist with Paid Work Experience or Internships
- Pay for GED Test a maximum of 3 times



Credit Recovery

- Assist youth participants who have dropped out of high school, or have been withdrawn from a credit recovery program, to retrieve credits for diploma completion.
- Supportive Services:
 - Daycare
 - Testing Fees
 - Transportation
- \$25/ credit earned
- Paid Work Experience/Internship



SHIFT

- Eligible Applicants ages 16-24, who are currently incarcerated in the Regional Youth Detention Center, on probation, or under court supervision, are offered specific WSGM services in order to assist them in completing and furthering their educational and employment goals.
- Transportation Support
- Work Readiness Training
- On-Job-Training
- GED Prep
- Daily Life Skills & Personal Relations Classes
- Transition to Unsubsidized Employment

Workshops & Life Skills

These workshops were developed to inform students about the options for their future and to guide students in understanding that good choices early can lead to more success in the future.

Topic May Include:

- Dress for Success
- Interviewing
- Resume Writing
- Time Management
- Mapping My Future



Qualifications

Age Requirements

- Must Be between 16-24 years of age.

Eligibility

- Drop-out
- Documented Disability
- Homeless or runaway
- Foster youth or emancipated foster youth
- Pregnant/ Parenting
- Offender or in juvenile court system
- Low income-based

Additional WIOA Funding Streams

Program Eligibility

Both Adults & Dislocated Workers must be at least 18 years old, have the "right to work", and meet income guidelines (if employed).

Overview Session

- The first step to learning more on this program would be to attend an overview session.
- Site visits and Online Overview sessions are scheduled monthly.
- You can find a session by checking the Events tab of WSGM's Facebook page.
- Self-guided sessions are available on with the WSGM Career Coaches and at the WorkSource One-Stop Center.

Application Process

- Complete Eligibility Survey
- Application
- TABE (1hr 05mins)
- Required Documents:
 - Social Security Card
 - Birth Certificate
 - State Issued Photo ID
 - Address Verification
 - Public Assistance Documentation
 - Child's Birth Certificate/Social Security or Proof of Pregnancy



Contact Information

Kaitlin Andrews

Youth Program
Assistant

770-538-2681

kandrews@gmrc.ga.gov

Juston Kearby

Youth Intake Program Assistant

770-538-2638

jkearby@gmrc.ga.gov

Danielle Avelar

Outreach Coordinator

770-538-4043

davelar@gmrc.ga.gov



Find Us
On Facebook!



1856 Thompson Bridge Road

Gainesville, GA 30501

770-538-2727

www.gmrc.ga.gov