

Community Based Instruction

A Transitional Program that meets the needs of the student with developmental and or cognitive disabilities through real life application:

- Independence and Daily Living skills
- Functional Academic Skills including reading, writing, communication and math skills.
- Social Skills
- Career Exploration and Job Readiness Skills
- Job Specific Skills (high school)

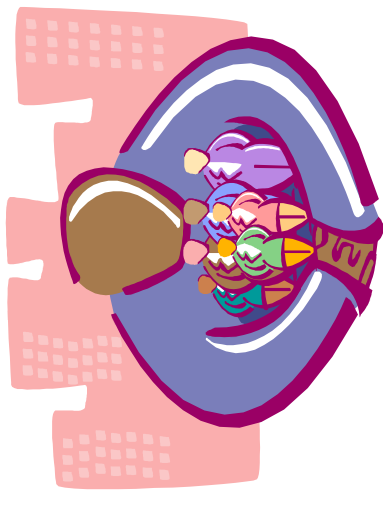
It takes the skills that are learned from the classroom and allows the student to apply the skills in real life situations.

CBI Teacher

CBVI provides opportunities for the student to encounter real life choices and learning situations they may face while on the job. It's an excellent teaching tool for students who plan to work immediately after high school.

CBVI Teacher

Community Based Instruction and Vocational Programs



FORSYTH COUNTY SCHOOLS

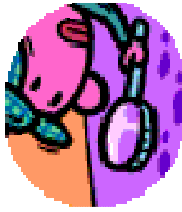
Department of Special Education
1120 Dahlonega Highway
Cumming, Georgia 30040

Contact: Susan Darlington
770-887-2461 ext. 202327
sdarlington@forsyth.k12.ga.us

APPLICATION OF DAILY
LIVING AND JOB SKILLS
WITHIN THE COMMUNITY

An Informational Brochure of the
following Community Based Programs for
Students with Disabilities:
CBI, CBVI and Project L.I.F.E.

Community Based Instruction (CBI)



Community Based Learning (CBI) is an integral part of the student's functional and independent living curriculum.

Exploration of Community Resources and Services

Through CBI, students can apply the skills previously taught in the classroom and generalize and/or apply them in real life situations, such as social skills, money management, independent living, career exploration, community awareness, self advocacy, academics and basic job readiness skills.

The benefits of CBI are endless. Real-world application through CBI reinforces the necessity and purpose of skills learned in the classroom while also providing learning opportunities that manifests the use of newly learned skills. Critical Thinking Skills are often required of a student while out in the community as one learns to problem solve, differentiate and prepare for situations and circumstances life activities may bring.

CBI is typically offered to students with disabilities in grades 3-8 who need repetition and simplistic instructions depending on the need.

Community Based Vocational Instruction (CBVI)

Community Based Vocational Instruction (CBVI) is another level of CBI and career exploration through the enhancement and application of job readiness skills or soft skills. Unlike CBI, CBVI provides students an opportunity to train at various job sites utilizing a ratio of no more than 4 students per teacher. Through CBVI, teachers are able to observe and monitor their students' ability of levels and application of job readiness skills. Students are continuously evaluated in order to ensure goals for job readiness are met. The CBVI teachers also model skills and coach students as they train.

Businesses who participate in CBVI are often pleased by the amount of coaching and modeling teachers provide at the job site. This alleviates initial concerns from management regarding training issues.

However, over time, a business may volunteer to place an individual student with an employee to enhance the job skills the student has mastered while at the job site.

Students on CBVI typically participate in at least 4 CBVI job sites per year.



Vocational Exploration and Basic Job Skills Training.

Project L.I.F.E. - Learning Independence for Future Employment

Students who participate in CBVI have the opportunity to apply for Project L.I.F.E. L.I.F.E. was implemented in the fall of 2007 to meet the transitional needs of older students. It is a community based vocational training program for students ages 18-21 years who need further job skills training while also gaining trade or vocational skills. Currently, Project L.I.F.E. is located at Siemens Energy & Automation Inc. where students train from 9 AM to 3 PM. L.I.F.E. allows students to increase work stamina, gain trade skills, and apply appropriate social skills while also utilizing time management and independent living skills. There is a 1:4 student to job coach ratio to ensure direct instruction and modeling. The goal of Project L.I.F.E. is to give students the skills necessary to apply for and move into a paid competitive work position.

Vocational Rehabilitation (VR) also assists with the transition from school to work. To ensure a seamless transition, all Project L.I.F.E. students are referred to VR prior to enrolling in the program.

